



Certificate of Analysis

The Following Data Analysis is Reviewed and Approved by

Nisrin Samsum

25 June 2020

Nisrin Samsum
 Head Chemist

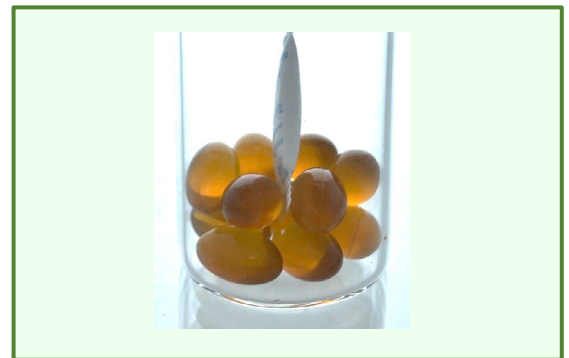
Date

Customer Name:	Total Health Companies	Sample Type:	Capsules
Sample Name:	25mg Soft Gel Capsules	Test Date:	25-Jun-20, 11:19:43
Sample ID:	SMSG25	Method:	1 ul. 80% ACN Isocratic
Sample Description:	Tan gel capsules		

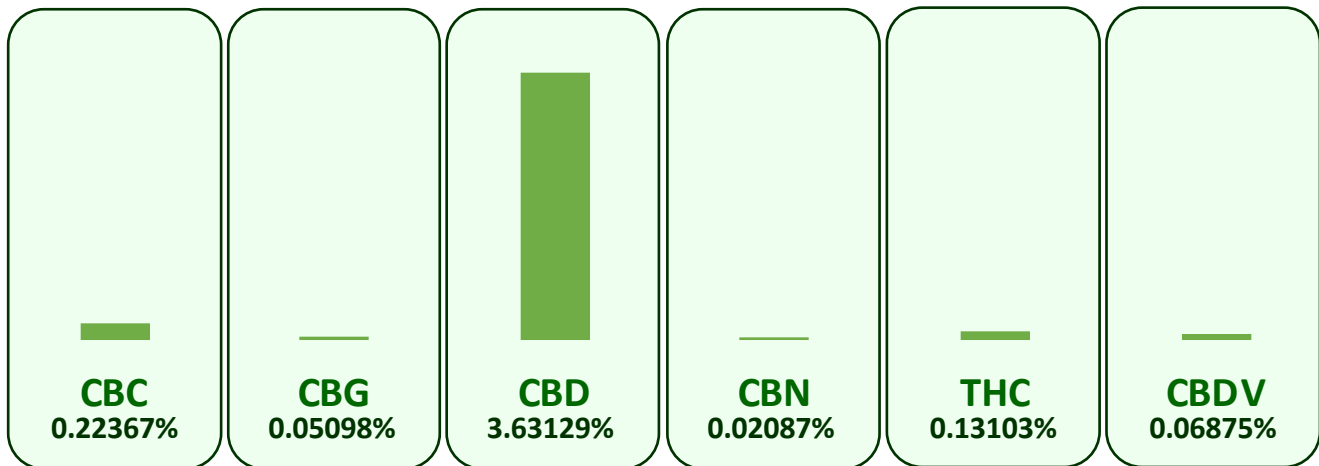
POTENCY CANNABINOID PROFILE

CANNABINOID	Concentration (mg/capsule)
Cannabichromene (CBC)	1.64
Cannabigerol (CBG)	0.37
Cannabidiol (CBD)	26.69
Cannabinol (CBN)	0.15
Δ 9 Tetrahydrocannabinol (THC)	0.96
Cannabidivarin (CBDV)	0.51

Notes:
 *N/D refers to a cannabinoid being undetectable.



* The chart below represents the weight percentage concentration between the cannabinoids in the sample. Each wedge is a representation of the percent of a specific cannabinoid relative to all. To achieve mg/g concentration simply move the decimal point over one place to the right for the percentages given below. (Example: if a cannabinoid was 0.256% weight concentration, this would correspond to 2.56mg/g)



Notes:

Free from visual mold, mildew, and foreign matter.

The presented report is not to be applied to any identical or similar products.

ISO 17025



LIC: B2019015666